

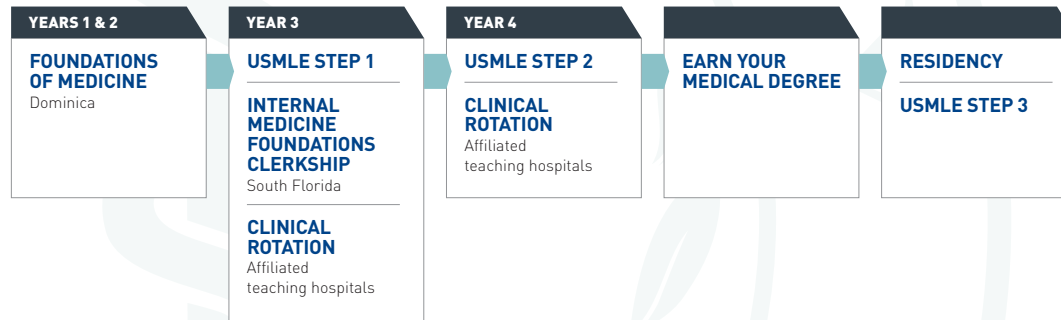


ABOUT THE DOCTOR OF MEDICINE DEGREE PROGRAM

At RUSM, providing an exceptional medical education to our students is our highest priority. We offer an intense, four-year program administered by a faculty whose primary responsibility is teaching. Our integrated curriculum allows faculty members from multiple areas of expertise to present traditional disciplines in an organ-based learning format that provides a comprehensive view of how the body works in disease and health.

Students earn their Doctor of Medicine (MD) degree upon successful completion of Foundations of Medicine, IMF clerkship, and clinical rotations at our affiliated teaching hospitals in the United States, United Kingdom, or Canada, and the passing of the first three phases of the United States Medical Licensing Examination® (USMLE): USMLE Step 1, USMLE Step 2 Clinical Knowledge and USMLE Step 2 Clinical Skills.

PATH TO RESIDENCY



INTERNAL MEDICINE FOUNDATIONS CLERKSHIP & CLINICAL TRAINING

The Clinical Science curriculum consists of 90 weeks of clinical training (students may request additional weeks of clinical training with the permission of the Dean). It begins with 6 weeks of IMF clerkship. The remaining 84 weeks consist of 44 weeks of additional core clerkships and 40 weeks of elective clerkships. Students participate in patient care while rotating through various medical specialties with teaching hospitals and other approved healthcare facilities.

The core clerkships required are as follows:

- Medicine – 12 weeks
- Surgery – 8 weeks
- Pediatrics – 6 weeks
- Family Medicine – 6 weeks
- Obstetrics/Gynecology – 6 weeks
- Psychiatry – 6 weeks

CURRICULUM

RUSM offers choice accelerated and regular curriculums allowing students to begin their clinical training 16 or 20 months into the program. These first four or five semesters of RUSM's integrated Foundations of Medicine curriculum allow students to address the processes of health and disease.

STANDARD CURRICULUM
SEMESTER 1 Fundamentals of Biomedical Science I Hematopoietic & Lymphoreticular System I Musculoskeletal System I Integumentary System I Clinical Skills I
SEMESTER 2 Cardiovascular System I Respiratory System I Digestive System I Nervous & Psychiatric System I Endocrine System I Clinical Skills II
SEMESTER 3 Fundamentals of Biomedical Science II Renal System I Digestive System II Reproductive System I Clinical Skills III
SEMESTER 4 Cardiovascular System II Renal System II Hematopoietic & Lymphoreticular System II Musculoskeletal System II Reproductive System II Clinical Skills IV
SEMESTER 5 Respiratory System II Endocrine System II Nervous & Psychiatric System II Integumentary System II Basic Science Review and Integration Clinical Skills V

ACCELERATED CURRICULUM
SEMESTER 1 Fundamentals of Biomedical Science I Hematopoietic & Lymphoreticular System I Musculoskeletal System I Integumentary System I Clinical Skills I
SEMESTER 2 Cardiovascular System I Respiratory System I Digestive System I Renal System I Nervous & Psychiatric System I Endocrine System I Reproductive System I Clinical Skills II
SEMESTER 3 Fundamentals of Biomedical Science II Hematopoietic & Lymphoreticular System II Musculoskeletal System II Digestive System II Reproductive System II Clinical Skills III
SEMESTER 4 Cardiovascular System II Respiratory System II Renal System II Endocrine System II Nervous & Psychiatric System II Integumentary System II Basic Science Review and Integration Clinical Skills IV

For complete curriculum overview please access our academic catalog:
https://www.rossu.edu/medical-school/documents/Med_Academic_Catalog.pdf



RUSM MD PROGRAM GOAL AND COMPETENCIES

The overarching goal for our school is that all graduating students of RUSM will possess the knowledge, skills, and attributes necessary to provide compassionate, high-quality care for individuals with acute and chronic diseases.

RUSM Graduating Student Competencies¹

- Provide patient-centered care that is compassionate, appropriate, and effective for the treatment of health problems and the promotion of health
- Apply knowledge of established and evolving biomedical, clinical, epidemiological and social-behavioral sciences, as well as the application of this knowledge to patient care
- Develop the ability to investigate and evaluate their care of patients, to appraise and assimilate scientific evidence, and to continuously improve patient care based on constant self-evaluation and life-long learning
- Integrate interpersonal and communication skills that result in the effective exchange of information and collaboration with patients, their families, and health professionals
- Practice a commitment to carrying out professional responsibilities and an adherence to ethical principles
- Express an awareness of and responsiveness to the larger context and system of health care, as well as the ability to call effectively on other resources in the system to provide optimal health care
- Demonstrate the ability to engage in an interprofessional team in a manner that optimizes safe, effective patient and population-centered care
- Employ the qualities required to sustain lifelong personal and professional growth

¹Englander R, Cameron T, Ballard AJ, Dodge J, Bull J, Aschenbrener CA. Toward a common taxonomy of competency domains for the health professions and competencies for physicians. *Academic Medicine*. 2013; 88(8).

CAREERS AS AN MD

Once students complete medical school and earn their medical degree, their first real goal is to obtain a residency. The majority of RUSM graduates secure residencies through the National Resident Matching Program®, often at some of the most prestigious teaching hospitals and leading medical centers in the US. Alumni have gone on to achieve positions as chief residents, earn academic posts at US medical schools, become board certified specialists, and be nationally recognized researchers and practitioners.

More than 830 RUSM graduates earned residencies in 2015. Some of the top specialties included Surgery, Pediatrics, Psychiatry, Anesthesiology, Emergency Medicine, Obstetrics/Gynecology, and Radiology.

For additional information, please visit <http://www.rossu.edu/medical-school/gainful-employment.htm>

RUSM APPROVALS AND ACCREDITATION, AND GRADUATE LICENSURE

- RUSM is accredited by the Dominican Medical Board (DMB) and the Caribbean Accreditation Authority for Education in Medicine and Other Health Professions (CAAM-HP).
- The United States Department of Education, through its National Committee on Foreign Medical Education and Accreditation (NCFMEA), has determined that the accreditation standards employed by the Dominica Medical Board are comparable with those used to evaluate programs leading to the MD degree in the United States by the Liaison Committee on Medical Education.
- Some states such as New Jersey, New York, California, and Florida require approval for international medical schools. RUSM is proud to be approved in each of these states.
- RUSM students are eligible to take all of the USMLE Step exams by registering with the Educational Commission for Foreign Medical Graduates (ECFMG) and are eligible to apply for licensure in all states in the United States.
- RUSM graduates receive a Doctor of Medicine degree which is recognized internationally. However, licensure requirements vary in each country. Some countries may require foreign medical graduates to take additional tests before receiving approval to practice.
- For additional information, please visit www.rossu.edu/medical-school/accreditation-and-approvals.cfm